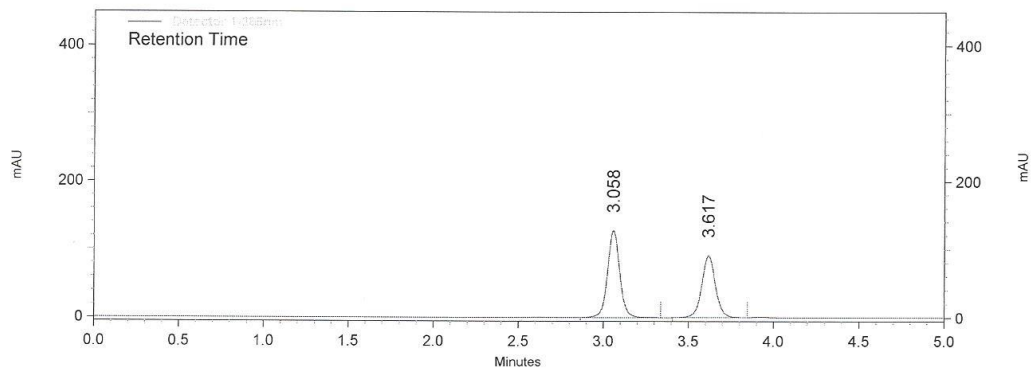


**Table (13): Results of Accuracy of Tadalafil.**

<b>Concentration %</b>	<b>50%</b>	<b>100%</b>	<b>150%</b>
<b>Average Area</b>	536000	1131115	1571804
<b>Assay %</b>	101.81	101.68	100.18
<b>RSD%</b>	0.57	1.51	0.27

The two tables are indicating a good recovery value; all data observed are within 98%-102% according to USP.



**Figure 16 : Accuracy results level 50**